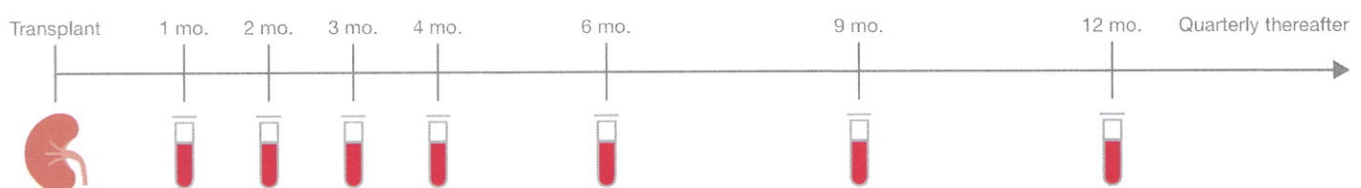


Indications for use

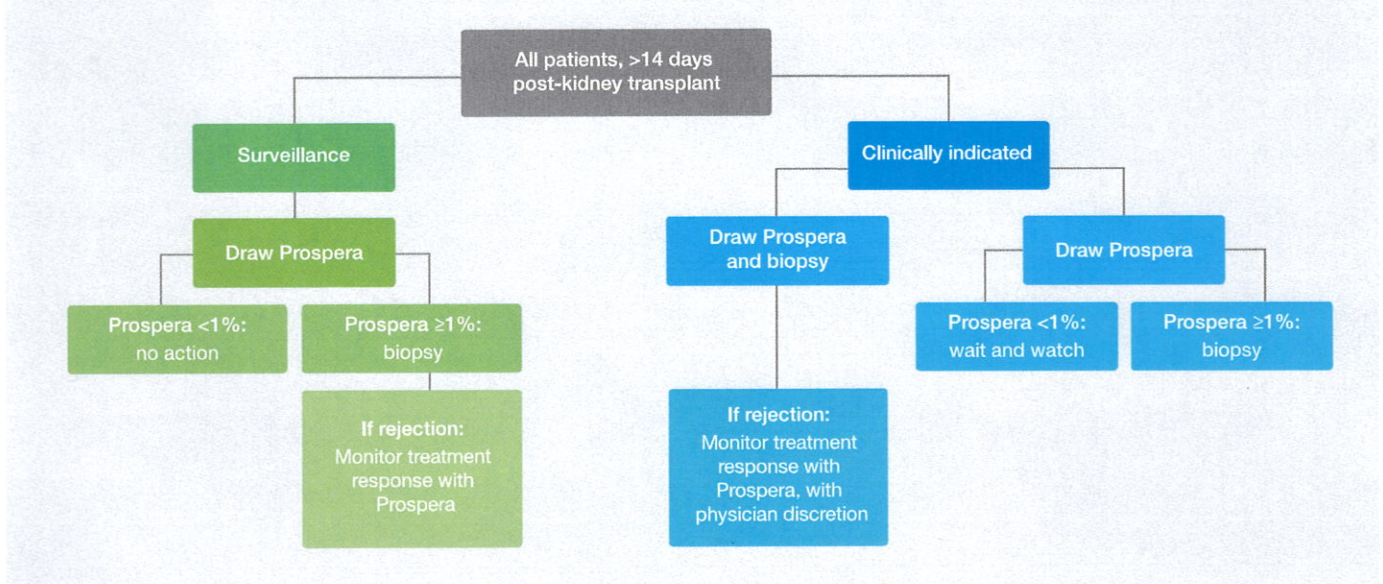
Prospera™ is a donor-derived cell-free DNA (dd-cfDNA) test for surveillance of rejection in post-renal-transplant patients. In a **surveillance** situation, Prospera testing is recommended at regular intervals: **1, 2, 3, 4, 6, 9, and 12 months** after renal transplant or most recent rejection (see below) to establish an individual baseline for dd-cfDNA levels, and to detect subclinical rejection. It should then be repeated quarterly for the life of the transplant.

Proposed draw schedule (surveillance)



Prospera testing should also be considered in **clinically indicated** situations. The decision to order Prospera should be made in accordance with physician-assessed risk of active renal allograft rejection, including when a biopsy is considered or performed to evaluate suspected transplant rejection. Results should be interpreted alongside patient history and other clinical factors.

Example flow for ordering Prospera



If you would like to discuss your clinic's draw schedule and indications for use in more detail, please contact the Prospera clinical team at transplantclinical@natera.com.

In the USA, the surveillance cadence for donor-derived cell-free DNA (dd-cfDNA) testing is strictly governed by MoDX LCD L38582.)<https://www.cms.gov/medicare-coverage-database/view/lcd.aspx?lcdid=38582&ver=10&keyword=donor-derived&keywordType=starts&areald=all&docType=NCD%2CF%2CP&contractOption=all&sortBy=relevance&bc=1=>

For kidney recipients (18+ years of age), the standard surveillance schedule approved for tests like **Prospera** is:

Time Period	Frequency
Months 1 – 4	Once per month
Months 6, 9, 12	Once every 3 months
Year 2 and beyond	Quarterly (every 3 months)

- **Earliest Start:** Typically 14 days post-transplant.
- **For-Cause Exception:** Additional tests are covered anytime there is a clinical suspicion of rejection (e.g., a $>25\%$ increase in serum creatinine).

2. Heart Transplant Cadence

The coverage windows for tests like **Prospera Heart** is:

Time Period	Frequency
Months 1 – 12	Once per month
Months 13 – 36	Once every 3 months
Month 37+	Once every 6 months

- **Earliest Start:** dd-cfDNA can typically start at **28 days** post-transplant.

3. Lung Transplant Cadence

Lung transplant surveillance is the most recent addition to broad coverage and generally follows the same intensive monitoring as heart transplants during the high-risk first year.

- **Standard Schedule:** Months 1, 2, 3, 4, 6, 9, and 12.